

USER'S MANUAL

digital monitor

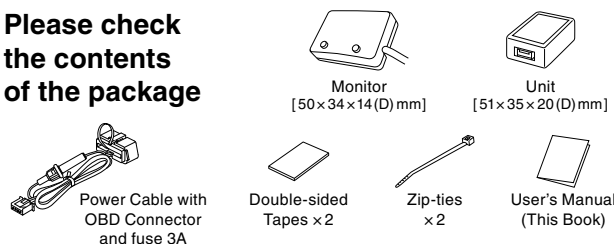
W-Temp RPM VOLTAGE

Thank you for purchasing this PIVOT product. Please read this manual carefully before installation and use. Please keep this manual for future reference.

<p>⚠ WARNING Improper use or disregard of these warnings may result in the injury or death of people.</p> <ul style="list-style-type: none"> Do not work in areas where there is excessive exhaust. Due to vehicle exhaust emission poisoning or fire may result in a damage to humans. Do not crush the cable. Please be careful that the cable does not get crushed by the seat rail or car door steel plate, nor cut by any sharp steel plate as this may cause a poor connection or an electric short leading to fire or other danger. Do not operate while driving. Operating or checking the display during driving may cause an accident; please use with the utmost consideration for safety. Please securely fasten the product to a stable place and be sure to store bundle away all wires with tape, etc... It is very dangerous to pull tangled wires by force or allow tangled wires to interfere with driving. 	<p>⚠ CAUTION Improper use or disregard of these warnings may cause injury to persons, damage the product and other things.</p> <ul style="list-style-type: none"> This product is for DC12V cars; Installation cannot be carried out on cars with other voltage batteries. Just after installation do not exert any strong force on the product. When double-sided tape is used for an installation be warned that when hot the tape temporarily loses adhesiveness. Do Not Use Chemical Cleaners. If the unit gets dirty please wipe with a soft cloth to remove any dirt. Do not use chemical cleaners such as thinner, benzene, or alcohol. Do not install the product in any place subject to high temperature or any place where water may be splashed. Make sure to replace all screws and parts to their original place. Do not install the product in a place where it will cause distraction. Do not, in any manner, process, take apart, or make changes to this product.
--	--

- 1. The display will not be proper if the ECU being used is not the standard one or if a sub-computer is being used, even in compatible car models.**
- 2. Cannot be used in combination with other company's products that use Diagnostic Monitoring Connectors.**
- 3. For details about using in combination with other PIVOT products that use Diagnostic Monitoring Connectors please see our Web Site at <https://pivotjp.com/obd-e/>.**

Please check the contents of the package



Features

The digital monitor, uses a simple connection to the Diagnostic Monitoring Connector, making it possible to analyze CAN data transmissions and display Water Temperature, RPM and Voltage.

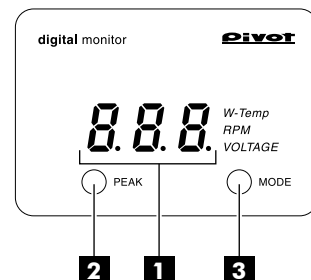
Easy-to-Install Monitor for Water Temperature, RPM and Voltage.

Thin Compact Monitor for Installation in a Wide Variety of Car Models.

Multi-Data Display	Switch between Water Temperature, RPM and Voltage in the same unit.
Easy Installation	Simply connect to the diagnostic monitor connector.
Thin Compact Monitor	14mm Flat-Design allows for Unobtrusive Installation.
Peak Hold	Save and display peak reading.

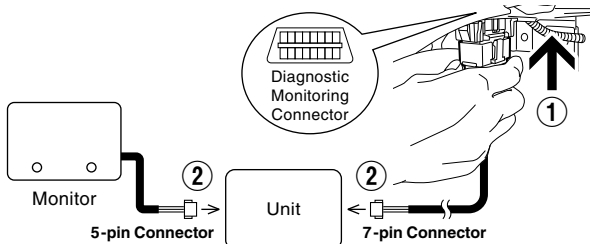
Part Names

- 1 Display**
Display Water Temperature, RPM and Voltage.
- 2 PEAK Switch**
Use to display and reset the peak value.
- 3 MODE Switch**
Use to change modes.



Connecting The Connector

- Insert the OBD Connector to the Diagnostic Monitoring Connector.
- Insert the 5-pin Connector from the Monitor and 7-pin Connector from the Power Cable to the Unit.



[Data] Placement Diagram for Diagnostic Monitoring Connector

TOYOTA	①②③④⑦	MAZDA	②④⑩
NISSAN	①②③④⑤⑦	SUBARU	②③
HONDA	②④⑤⑥⑧⑨	SUZUKI	②④
MITSUBISHI	②③④⑤	DAIHATSU	②③④⑤

- By the accelerator pedal
- At the right foot of the driver seat (with lid)
- At foot of driver seat in the center
- At the left foot of the driver seat (with lid)
- At the right side of the center console
- At the right foot of the passenger seat
- Behind the panel by the steering (with lid)
- At the left foot of the passenger seat
- At the left side of the center console
- Panel to right of steering wheel (upper part of small storage box)

[Reference] Notes about using the OBD Connector

Make sure to grip the distended portions when pulling it out or inserting it.

⚠ CAUTION
Do not pull on the wires when trying to remove the connector; the wires may become disconnected.

If you unable to get a grip on the distended portions.

If you unable to get a grip on the distended portions, pull out the connector by pulling on the end of the zip tie.

⚠ About Using OBD Products in Combination

If you wish to use this product in combination with products in our 3-drive Series (FLAT or COMPACT), PROGAUGE Series, the "OBD2 Wiring Kit OBD-EH" (sold separately) makes installation a snap. For more details about using combinations of products see here. <https://pivotjp.com/obd-e/>

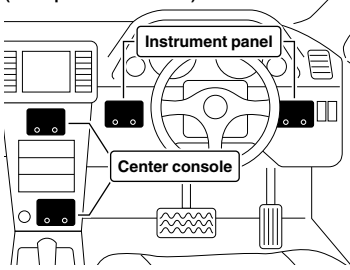
*When using this product with products mentioned above, they can only be used together in compatible model vehicles for both products.

Fastening The Product

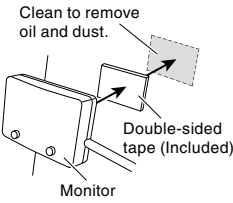
● Installing The Monitor

Affix with double-sided tape to a position which is easy to see and which allows for easy operation.

(Example of Installation)



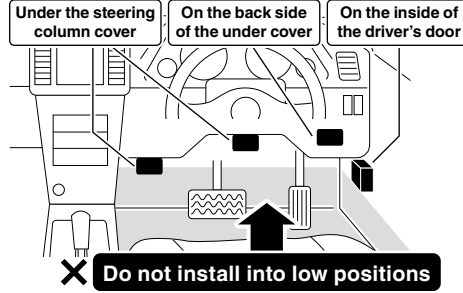
(How to Install)



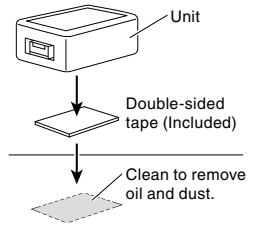
● Installing The Unit

As shown in the diagram below, fasten the unit into positions not usually affected by water.

(Example of Installation)



(How to Install)



Please be sure to bundle away all wires with tape, etc...

While in use if wires become free they may interfere with driving and cause accidents. Also, wires which are smashed or crushed may result in a short and can be extremely dangerous.

How to Operate

Reading the Display

Water Temp Display Range: -35 to 150 °C
1 °C unit

-35 ~ -1 °C 0 ~ 99 °C 100 ~ 150 °C

- 00 00 C 100

The first place on the left shows "-" (minus). The third place from the left shows "C" (celsius). Numerical Value Only.

RPM Display Range: 0 to 9,900 rpm
100 rpm unit

The third place from the left shows "r" (rpm). 00 r

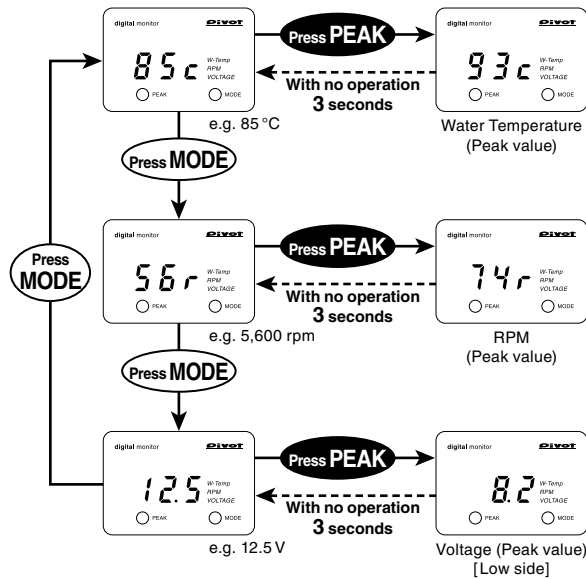
Voltage Display Range: 8 to 18 V
0.1 V unit

The third place from the left shows "." (decimal point). 00.0

*Some car models cannot display Voltage.

Real-time Display (Lighting)

Press the MODE switch to change the display mode.



Peak Value Display (Blinking)

Pressing the PEAK switch while the Real-time Display is on will show the corresponding peak value for that mode.
*Peak readings are reset when the key is turned OFF.

Reset the Peak Value

*Only the peak value on display will be reset.
*This will return to the Real-time Display for the currently displayed mode.

*Due to an analysis time for the CAN data transmission it may take up to 5 seconds from engine start before the display lights up.

*This product is interlocked with the ECU (engine computer) power. Depending on the model of car, the illumination may remain on for up to 3 minutes even after the engine has been turned off; this is normal.

Troubleshooting

Trouble	Possible Causes	Possible Solutions
Does not work with Engine start.	Poor connection of 5-pin Connector, 7-pin Connector or OBD connector.	Please reconfirm whether wiring and connections are correct or not.
	The unit has been installed into an incompatible car model.	Please check the "Fitting List".
Upon starting up, the unit will start in the newly changed mode.	Because after changing modes, if the car's engine is turned off within 3 seconds, the new setting will not be stored, make sure to wait at least 3 seconds before turning the engine off.	
The displayed values are different from the standard meter.	Due to the ECU information received, the displayed values on this product may differ from those of standard or other meters.	