

**Pivot**

Movement beyond Belief.



**PROGAUGE**

STEPPING DRIVE  
TACHOMETER Ø80

# PROGAUGE

STEPPING DRIVE  
TACHOMETER Ø80

For the Sake of your Engine:

## Don't miss Even Momentary Over-Revving!

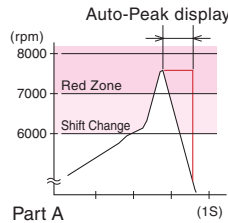
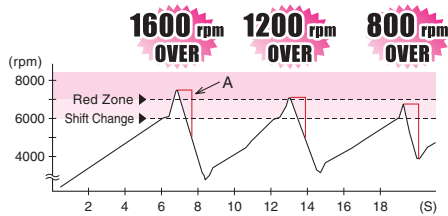
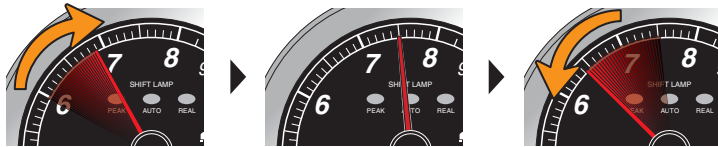
### World's First Auto-Peak Display provides Accurate Peak Numbers with each and every Shift.

Upon shifting gears the resulting momentary over-rev of between 500-1500 rpm places high strain on the engine, especially when close to the red zone. And until now, that momentary movement was difficult to catch with the human eye. PIVOT's PROGAUGE provides you with the world's first auto-peak display which holds the reading for one second whenever the revolutions exceed the set shift point; making it easy to see when an over-rev has occurred. Our new secret weapon born from experience in circuit racing allows you to set the optimum shift point according to the type of car and driver so as not to enter the red zone. (patent pending)

RPM beyond the Shift Point

One-second Peak Display

Return to Real Mode



### Three Types of Display. Possible to switch the display as necessary with just one touch.

- REAL** Normal Real Display for All Areas.
- AUTO PEAK** Returns to Real Display after holding peak for one second upon exceeding set shift point. Normal Real Display when below set shift point.
- PEAK** Display Peak for All Areas.

### No Wiring Necessary; Simply insert the Connector. (Only PT2)

With some Toyota and Daihatsu models it is possible to connect directly using the coupler to the diagnostic monitoring connector meaning there is no need for troublesome wiring.

### Can be used in conjunction with other Diagnostic Monitor Connected Products.

It is possible to use PT2 in conjunction with other PIVOT products (X3, RM-07, WTM, and so on) which connect to the Diagnostic Monitor Connector. If you wish to use in conjunction with another company's product which connects to the Diagnostic Monitor Connector, please directly wire all PT2 connections or use PT1.

### Smooth High Precision Display from Ignition Signal Detector.

Because the rpm signal is not via serial communication but by a pulse signal detection method, the results are a smooth and highly accurate display. (Same as PT2)

### Easy-to-Read Wide Range Display.

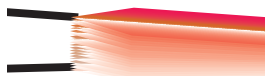
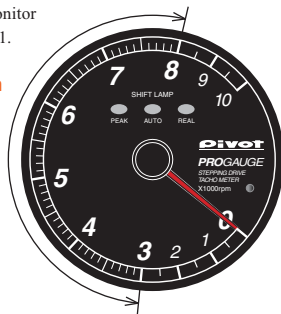
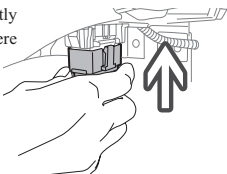
The display has been made easier to read by enlarging the 3,000 to 8,000 rpm area.

### High Precision Stepping Motor.

With each step of the meter being a minute 0.312 degrees or one nine-hundredth of the gauge, our stepping motor is able to provide a smooth, highly precise display.

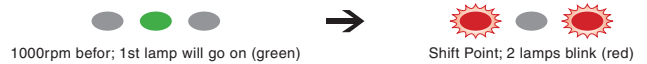
### All-in-One Unit: No Separate Controller Necessary.

The switches have been added to the meter itself; meaning there are no other parts to be installed.



### Easy-to-Grasp F-1 Type Sequential Lamp System

A smooth shift change can be realized due to the F-1 type sequential lamp system that gives you warning lights as you approach the set rpm.

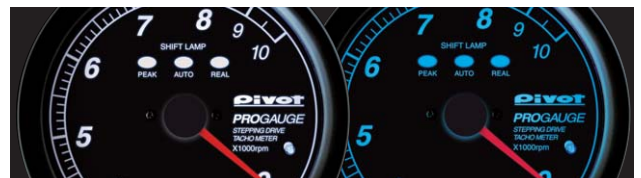


### World's Most Compact Lightweight Body\* means Wide Array of Installment Choices!

The lightweight body of 107 grams even allows you to easily place on the dashboard with double-sided tape without the worry of vibration; can also be easily implanted into the front panel. \*One-piece body weighs only about 107 grams

### LED Permeating Illumination

The translucent LED system provides a clear even display which is easy on the eyes.



Super Luminous White LED Illumination W Super Luminous Blue LED Illumination L

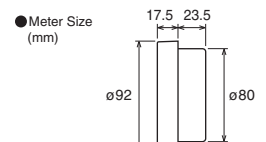
**PT1** W (White Illumination) Universal Type  
L (Blue Illumination) ¥18,900

	IG ⊕12V	<b>Contents</b> ● Meter ● Meter Holder ● Cable Set ● User's Guide
	Earth rpm signal (See user's guide) Illumination (No wiring is OK)	

**PT2** W (White Illumination) For Toyota and Daihatsu models  
L (Blue Illumination) ¥21,000

	Connect to the Diagnostic Monitor Connector Illumination (No wiring is OK)	<b>Can be used in conjunction!</b> PIVOT products which connect to the Diagnostic Monitor Connector (X3, RM-07, WTM)	<b>Contents</b> ● Meter ● Meter Holder ● Cable Set with OBD Connector ● User's Guide
	If you wish to use in conjunction with another company's product which connects to the Diagnostic Monitor Connector, please directly wire all PT2 connections or use PT1.		

- Compatible Car Models  
1, 2, 3, 4, 5, 6, 8 cylinder vehicles, Special A car  
Special A = Latest Nissan model cars, etc.
- Battery = 12V vehicles
- Specs  
Shift Lamp Settings = 3000 ~ 10000rpm, 200rpm unit



NOTE 1. For your safety, please do not operate during driving or check the display for long periods of time. 2. Please be sure to read and carefully follow the instructions in the User's Manual. 3. Please do not lose the User's Manual and accessories, as you will held liable for the cost of reissuing it.

**Pivot** pivotjp.com

PIVOT CORPORATION MADE IN JAPAN

87-3, Shimookada Okada, Matsumoto-shi, Nagano, 390-0313 JAPAN TEL 0263-46-5901

As of 2007.08