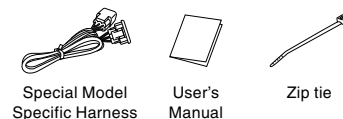


User's Manual (TH-3A)

3 drive Series THROTTLE CONTROLLER

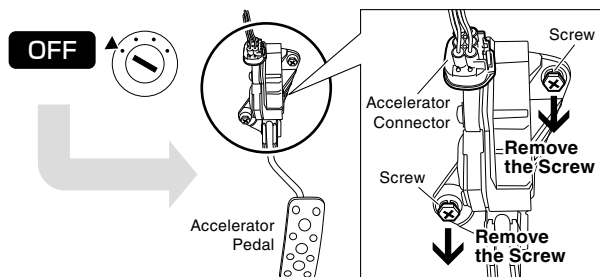
Please install after reading the "User's Manual" that came with your product.

Check the contents

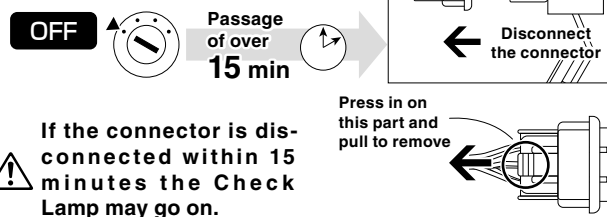


- This product is designed for use with 3-drive. For safe use and avoid any accident do not use in conjunction with products from other manufacturers.
- Make sure to fasten the 6-pin connector in an area that is not exposed to water.

1 Turn the key switch to OFF, put gear into P or N and remove the accelerator pedal. (If it is possible to disconnect the coupler without removing the accelerator pedal, please proceed to step 2.)



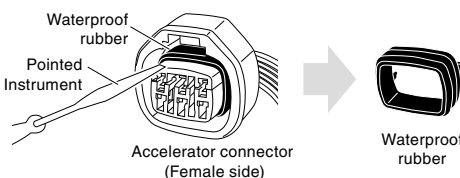
2 After having waited at least 15 minutes from the time that the key switch was turned OFF, disconnect the accelerator connector with pressing down on the hook strongly.



⚠ If the connector is disconnected within 15 minutes the Check Lamp may go on.

3 Take off the waterproof rubber of the accelerator connector

With a pointed instrument like flathead screwdriver or tweezers, take off the waterproof rubber. Note: Put the waterproof rubber in a plastic bag or some such container and store in a safe place.



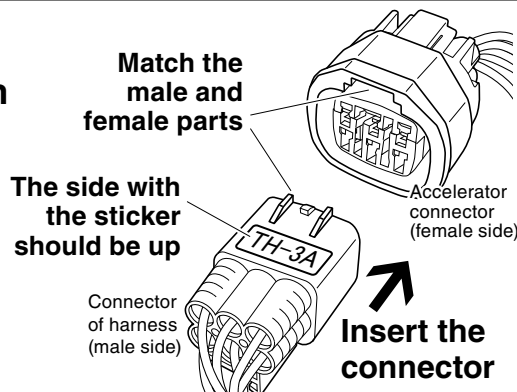
⚠ Remove the waterproof rubber of the accelerator connector (female) on the vehicle side only. Do not remove the specialized harness side.

4 Insert the male side of the specialized harness into the female side of the accelerator connector

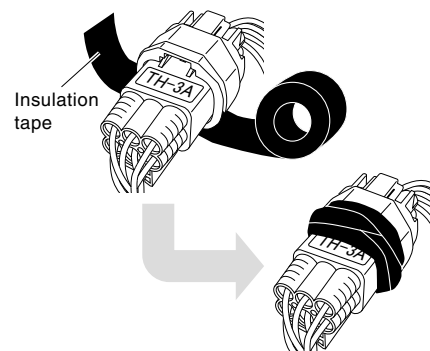
Match the protruding part of the connector with the female part and insert to as far as it goes.

Caution about insertion direction

Please insert the male connector carefully referring to the figure on the right.

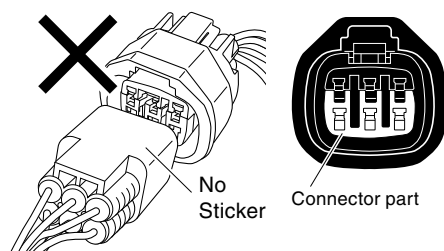


Not to disconnect the connector, fasten by wrapping insulation tape around it.

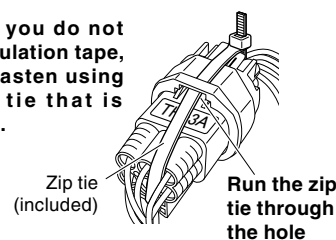


⚠ Do not insert the wrong way

If the connector has been inserted in the wrong direction, a part of the accelerator connector will remain in the connector on the harness. If this happens it cannot be inserted properly. Please put the remaining part back into its original place and try again.

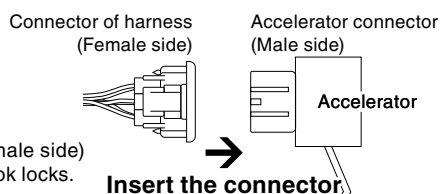


Note: If you do not have insulation tape, please fasten using the zip tie that is included.



5 Insert the female side of the specialized harness into the male side of the accelerator connector

Insert the specialized harness (female side) securely to the place where the hook locks.



6 Return the accelerator pedal to its original position and make sure it is securely fastened

7 Connect all other connectors

Note: For more details see the 3-drive User's Manual.