

Please install after reading the "User's Manual" that came with your product.

Pivot
(As of March, 2015)

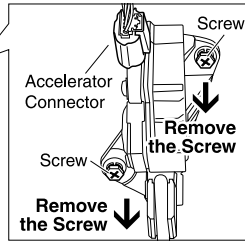
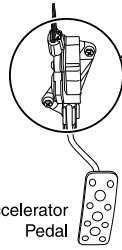
USER'S MANUAL (Special Model Specific Harness) For 3-drive

- ⚠ This product is designed for use with 3-drive. For safe use and avoid any accident do not use in conjunction with products from other manufacturers.
- Make sure to fasten the 6-pin connector in an area that is not exposed to water.

- 1** Turn the key to OFF, put gear into P or N and remove the accelerator pedal. (If it is possible to disconnect the coupler without removing the accelerator pedal, please proceed to step 2.)



Accelerator Pedal



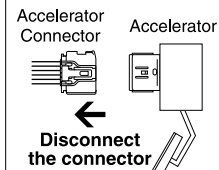
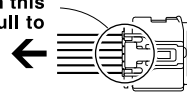
- 2** After having waited at least 15 minutes from the time that the key was turned OFF, disconnect the accelerator connector with pressing down on the hook strongly.

- ⚠ If the connector is disconnected within 15 minutes the Check Lamp may go on.

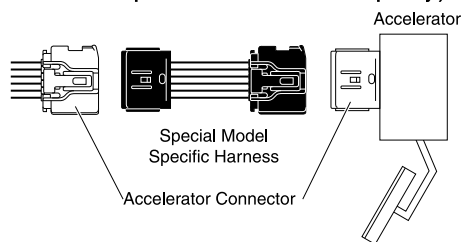


Passage of over
15 min

Press in on this part and pull to remove



- 3** Install the specialized harness. (Make sure that the coupler has been inserted completely.)



- 4** Return the accelerator pedal to its original position and make sure it is securely fastened.

- 5** Connect all other connectors.

※ For more details see the 3-drive User's Manual.

PIVOT CORPORATION

87-3, Shimookada Okada, Matsumoto-shi, Nagano, 390-0313 Japan TEL0263-46-5901