

# USER'S MANUAL

# X2C

MULTI GAUGE ø60

Thank you for purchasing this PIVOT "X2C" (Compatible with CAN Data Communication).  
Please read this manual carefully before installation and use.  
Please keep this manual for future reference.

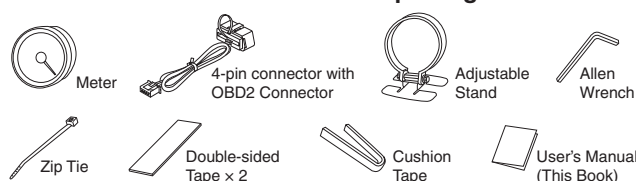
<p><b>⚠ WARNING</b> Improper use or disregard of these warnings may result in the injury or death of people.</p> <ul style="list-style-type: none"> <li>● <b>Do not work in areas where there is excessive exhaust.</b> Due to vehicle exhaust emission poisoning or fire may result in a damage to humans.</li> <li>● <b>Please securely fasten the product to a stable place.</b> It is very dangerous if, while in use, the product falls off and interferes with braking.</li> <li>● <b>Do not crush the cable.</b> Please be careful that the cable does not get crushed by the seat rail or car door steel plate, nor cut by any sharp steel plate as this may cause a poor connection or an electric short leading to fire or other danger.</li> <li>● <b>Do not operate while driving.</b> Operating or checking the display during driving may cause an accident; please use with the utmost consideration for safety.</li> <li>● <b>Please be sure to store bundle away all wires with tape, etc...</b> It is very dangerous to pull tangled wires to interfere with driving.</li> </ul>	<p><b>⚠ CAUTION</b> Improper use or disregard of these warnings may cause injury to persons, damage the product and other things.</p> <ul style="list-style-type: none"> <li>● <b>This product is for DC12V cars;</b> Installation cannot be carried out on cars with other voltage batteries.</li> <li>● <b>Just after installation do not exert any strong force on the product.</b> When double-sided tape is used for an installation be warned that when hot the tape temporarily loses adhesiveness.</li> <li>● <b>Do Not Use Chemical Cleansers.</b> If the unit gets dirty please wipe with a soft cloth to remove any dirt. Do not use chemical cleansers such as thinner, benzene, or alcohol.</li> <li>● <b>Do not install the product in any place subject to high temperature or any place where water may be splashed.</b></li> <li>● <b>Make sure to replace all screws and parts to their original place.</b></li> <li>● <b>Do not install the product in a place where it will cause distraction.</b></li> <li>● <b>Do not, in any manner, process, take apart, or make changes to this product.</b></li> </ul>
--	--

**1. In the following circumstances the unit cannot be installed; doing so may cause damage.**

- The ECU is different from the standard for that model.
- If a sub-computer is being used.

**2. Cannot be used in combination with other company's products that use diagnostic monitoring connectors.**

### Please check the contents of the package



## Features

With the X2C, by simply connecting to the diagnostic monitoring connector, the CAN data transmission is analyzed and both water and intake temperatures can be alternately viewed.

### Know your Water Temp

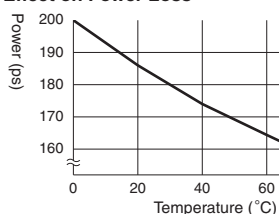
Water temperature is a good signal of overheating, loss of power and other engine malfunctions; knowing it helps you maintain the optimum driving condition. Get in the know for a better ride.

### Know your Intake-Air Temp

A 20°C rise in intake temperature results in a 12 ps\* loss of power; essential information when driving with speed and power is important. Get in the know for a better ride.

\* This calculation uses the air density of a car with an engine power of 200 ps; actual figures may be different.

Example of Intake Temperature's Effect on Power Loss



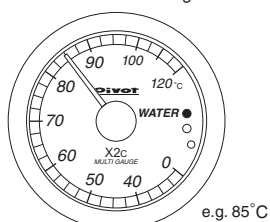
<b>2 in 1 Display</b>	With just one unit switch between two displays; Water Temperature and Intake-air Temperature
<b>Smooth Action</b>	New Controller provides needle action quick and smooth
<b>Easy-to-read translucent LED</b>	Clear even transmissive LED light (LED will normally remain illuminated while in operation.)
<b>Peak Hold</b>	Save and display peak reading.
<b>Easy Installation</b>	Coupler connection to the diagnostic monitoring connector for easy-installation.
<b>Stepping Drive</b>	Stepping motor drive brings you a high-performance display with no hunching or overshooting.

## Displays and Uses

### 1. Water Temp

**Display** 0°C to 120°C

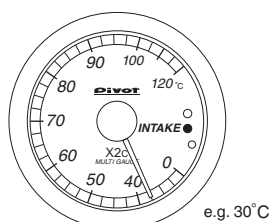
**Use** ●Prevention of overheating  
●Check Heating etc.



### 2. Intake-air Temp

**Display** 0°C to 120°C

**Use** ●Check Intake-air Temp etc.



### 3. Peak Hold

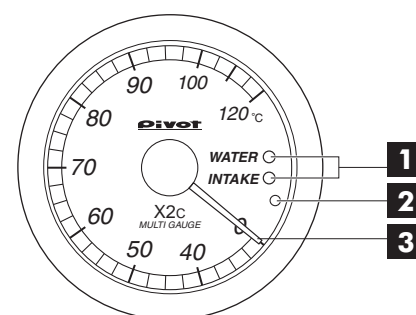
**Use** ●Check Highest Water Temp ●Check Highest Intake-air Temp

#### Opening Demo

During the opening demo, the needle will move slightly to minus several times. Then it will move to the maximum value and finally to reading for current measurement item.

※Due to analyzation time for the CAN data transmission it may take up to 5 seconds from engine start before the opening demo begins.

## Part Names



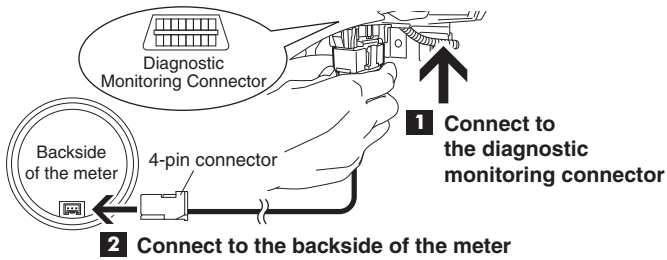
- 1 Mode Lamp** The lamp for the current mode will light up.
- 2 Switch** Use to switch modes and reset the peak value.
- 3 Needle** Shows the current values and peak value.

#### Turning off the Illumination

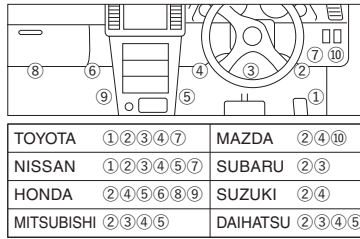
This product is interlocked with the ECU (engine computer) power. Depending on the model of car, the illumination may remain on for up to 3 minutes even after the engine has been turned off; this is normal.

# Connecting The Connector

- 1 Insert the OBD2 connector to the diagnostic monitoring connector.
- 2 Insert the 4-pin connector to the backside of the meter.



## [Data] Placement Diagram for Diagnostic Monitoring Connector



- ① By the accelerator pedal
- ② At the right foot of the driver seat (with lid)
- ③ At foot of driver seat in the center
- ④ At the left foot of the driver seat (with lid)
- ⑤ At the right side of the center console
- ⑥ At the right foot of the passenger seat
- ⑦ Behind the panel by the steering (with lid)
- ⑧ At the left foot of the passenger seat
- ⑨ At the left side of the center console
- ⑩ Panel to right of steering wheel (upper part of small storage box)

## [Reference] Notes about using the OBD2 connector

Make sure to grip the distended portions when pulling it out or inserting it.

**CAUTION**  
Do not pull on the wires when trying to remove the connector; the wires may become disconnected.

If you unable to get a grip on the distended portions.

With some car models it may be difficult to get a good grip on the connector.

In such case, pull out the connector by pulling on the end of the zip tie.

## ! About Using OBD2 Products in Combination

If you wish to use X2C in combination with products in our PROGAUGE / REV LAMP Series and/or our 3-drive Series (FLAT or COMPACT), the "OBD2 Wiring Kit OBD-EH" (sold separately ¥3,200) makes installation a snap.

For more details about using combinations of products see here. [http://pivotjp.com/information/obd\\_conjunction-e.html](http://pivotjp.com/information/obd_conjunction-e.html)

\*When using the X2C with products mentioned above, they can only be used together in compatible model vehicles for both products.

# Installing The Product

Install in an easy-to-view location.

## A. Installation with the Adjustable Stand

Fasten using the double-sided tape. (On top of the steering column cover or dashboard.)

- 1 Slightly loosen the screw and install the gauge into the band holder.
- 2 Bend the stand to securely fit the place of installation.
- 3 Fasten using the double-sided tape. (Clean the surface; removing all oil and dust.)
- 4 After deciding the position and angle of the meter face, fasten the hexagonal bolts on both sides to secure.

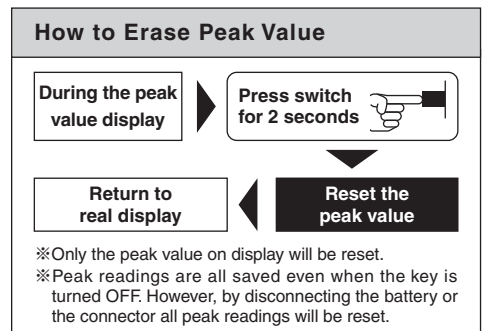
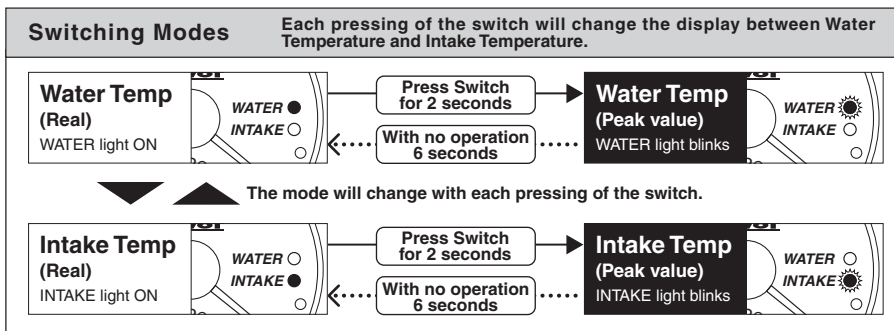
## B. Mount into the Panel

- 1 Wrap the cushion tape around the base of the meter.
- 2 Press into the 60 mm hole in the panel.

# How to Operate

Due to analyzation time for the CAN data transmission it may take up to 5 seconds from engine start before the opening demo begins.

- 1 Key Switch ON (Engine start)
- 2 Opening Demo
- 3 Water Temp / Intake Temp display
- 4 Key Switch OFF (Engine stop)
- 5 Meter OFF The needle stops in the vicinity of 0.



# Troubleshooting

Trouble	Possible Causes	Possible Solutions
Does not work with Engine start.	Poor connection of 4-pin connector or OBD2 connector. The unit has been installed into an incompatible car model.	Please reconfirm whether wiring and connections are correct or not. Please check the "Fitting List".
Upon starting up, the unit will start in the newly changed mode.	Because after changing modes, if the car's engine is turned off within 3 seconds, the new setting will not be stored, make sure to wait at least 3 seconds before turning the engine off.	
Before the opening demo starts the needle briefly moves.	This is due to a special characteristic of the meter and is not a malfunction.	
The displayed values are different from the standard meter.	Due to the ECU information received, the displayed values on this product may differ from those of standard or other meters.	