

PIVOT SOUND USER'S GUIDE (No.1)

VOLTAGE METER CAX-VM

Thank you for purchasing our PIVOT product. Please read these instructions carefully before installing or using this device.

- When installing this product, we recommend that if technical knowledge becomes necessary please consult a qualified mechanic.
- Please do not lose this user's guide, as you will held liable for the cost of reissuing it.

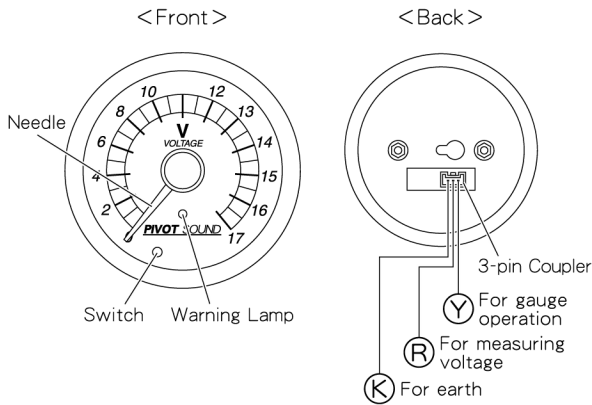
FEATURES

- Our stepping motor brings you high precision and quick response.
- Precise response to instantaneous voltage changes.
- Check for sound distorting voltage loss.
- Check your battery condition before it dies.
- Possible to make your desired warning settings (voltage loss).
- BLUE illumination changes to RED when set warning limit is exceeded.
- Peak hold function (voltage loss). ● Displays wide range of 0-17V.

CONTENTS

Meter	3-pin Coupler Cable	Wire Connectors X4	Cushion Tape	User's Guide

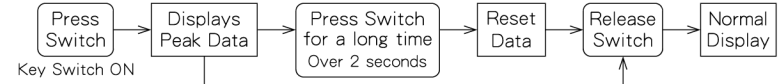
PART NAMES



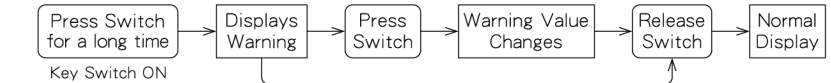
SWITCH OPERATION SETTINGS

For peak data and for making warning settings.

PEAK DATA (voltage loss)

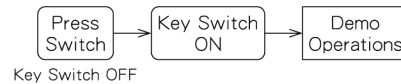


WARNING SETTINGS



DEMONSTRATION MODE SETTINGS

This mode is for demonstration at a store, so there is usually no need to use it.



- If you have switched off the demo mode, please follow the directions to the left again.
- Once the demonstration mode has been set up, it will be saved and there is no need to reset each time you switch the key ON.

EXAMPLE OF VOLTAGE CHECK

For checking voltage, choose from either of the 2 types below to meet your needs.

WIRING METHOD 1 (Battery Voltage Measurement)

Under normal conditions follow this method.

Checks voltage when you use starter, headlight, electric fan and /or air conditioning.

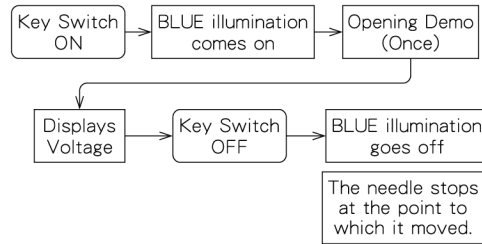
WIRING METHOD 2 (Measures ⊕B Voltage Supply to Audio Equipment)

Checks ⊕B voltage to head unit or amplifier.

Checks all audio units for ⊕B (main power) voltage loss caused by high amplifier output, differences in wiring and other reasons that may result in sound distortion and low sound quality. (Possible to simultaneously check with wiring method 1.)

NOTE: When moving the key from ON to ST quickly (within 0.2 sec), sometimes the peak value (lowest voltage) will be incorrect.

HOW TO OPERATE

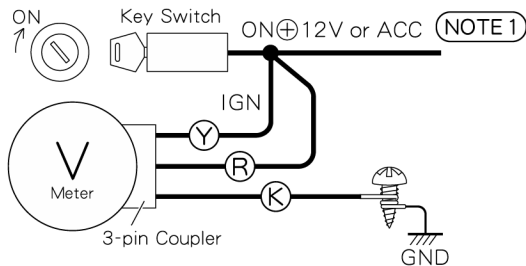


The needle stops at the point to which it moved.

SPECS

- Operating Voltage Range = 6-17V
- Current Consumption = Less than 100mA
- Display Voltage Range = 0-17V
- Lowest Possible Displayable Voltage = 6V
- Peak Display Range = 5.5-17V (Possible to measure up to 0V if voltage loss occurs within 0.2 seconds.)

WIRING METHOD 1 BASIC WIRING Battery Voltage Measurement



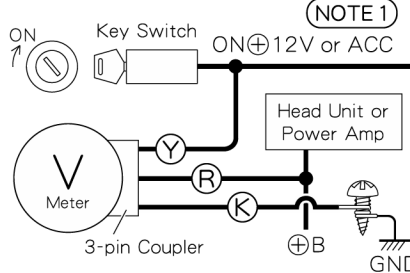
Ⓨ = YELLOW wire Ⓡ = RED wire Ⓚ = BLACK wire

⊕B	Normally 12V, even if the key switch is OFF	ACC	12V, if key switch is turned to ACC	● Wire Connector
IGN	12V, if key switch is ON	GND	Body Earth	

NOTE 1. If it is not necessary to measure peak data (lowest voltage) when starting the engine, connect to ACC. If it is necessary, connect to ON⊕12V. (Voltage will drop to its lowest point when operating the starter, so when starting the engine make sure to reset peak data once before measuring peak data.)

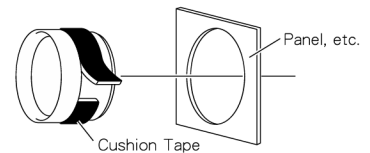
2. Properly connect the BLACK wire to a screw near the steel plate that carries earth.

WIRING METHOD 2 Measures ⊕B Voltage Supply to Audio Equipment



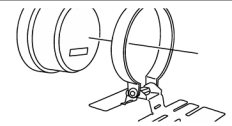
METER INSTALLATION

Installing Into Front Panel.



- Wrap the cushion tape around the base of the meter and forcibly insert into the 60mm hole in the panel.

INSTALLING INTO DASH BOARD



Sold separately. Please purchase Pivot's Band Holder (¥1,554) or other such product.

TROUBLESHOOTING

※Please make the following checks before seeking repair.

Trouble	Possible Causes	Possible Solution
The opening demo (needle moves once) does not work with key switched ON.	<ul style="list-style-type: none"> ● The RED / YELLOW / BLACK wire connections are wrong. ● Bad wiring contact or connection. 	Check the items in the list of causes.
BLUE illumination does not come on.	<ul style="list-style-type: none"> ● The fuse is blown for the RED and YELLOW wire line. ● The BLACK wire has been connected to a screw that is not earthed. 	
No voltage displayed.		

HOW TO USE THE WIRE CONNECTORS

※If soldering is possible, please do so.

1 	2 	<ul style="list-style-type: none"> ※ Use a crushing tool to press the wire connector. If you do not have such a tool, use pliers or such to fold and crush the connector together for a secure contact. ※ After covering, make sure to insulate properly with vinyl tape.
3 	4 	

PIVOT CORPORATION

87-3 OKADA SHIMO-OKADA MATSUMOTO-SHI NAGANO 390-0313 TEL0263-46-5901